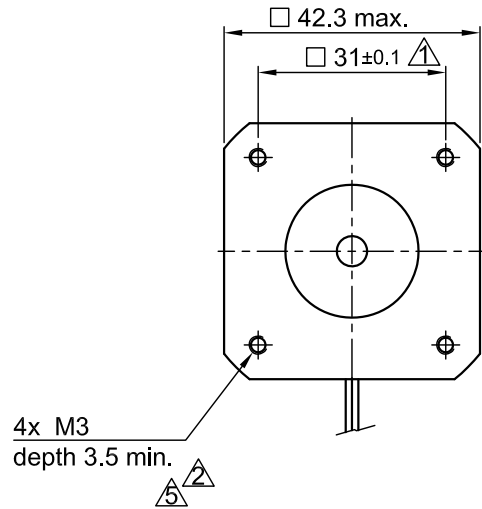
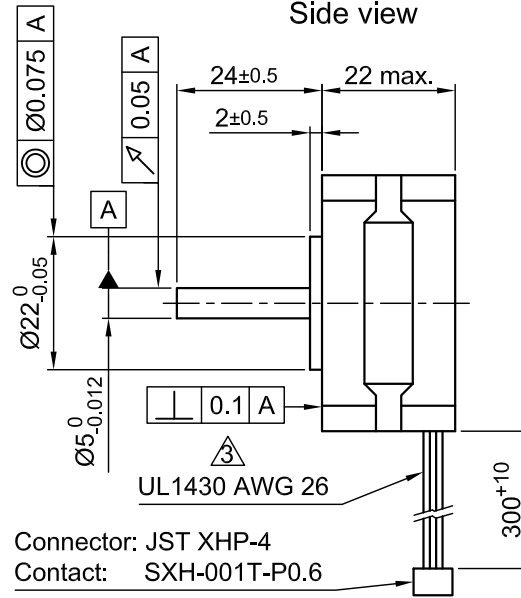


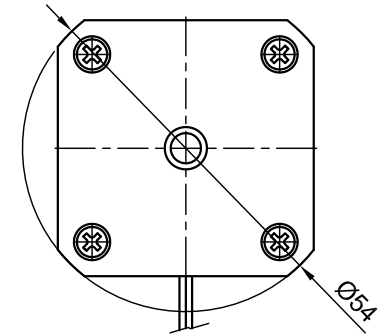
Front view and mounting



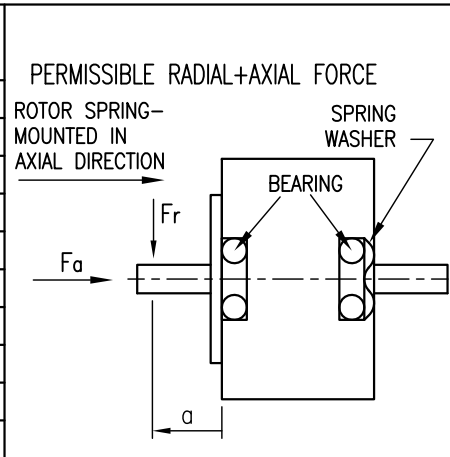
Side view



Rear view



CONNECTION	BIPOLAR
SPECIFICATION	
VOLTAGE (VDC)	8.7
AMPS/PHASE	1.0
RESISTANCE/PHASE (Ohms)@25°C	8.7±15%
INDUCTANCE/PHASE (mH) @1KHz	18±20% $\triangle 3$
HOLDING TORQUE (Nm) [lb-in]	0.17 [1.505] $\triangle 1$
STEP ANGLE (°)	0.9
STEP ACCURACY (NON-ACCUM)	±5% $\triangle 4$
ROTOR INERTIA (Kg-m ²) [lb-in ²]	2.0x10 ⁻⁶ [6.8x10 ⁻³]
WEIGHT (Kg) [lb]	0.15 [0.33]

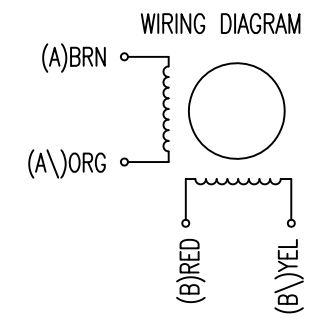


TYPE OF CONNECTION (EXTERN)	MOTOR			
	BIPOLAR	CONNECTOR PIN NO.	LEADS	WINDING
A —	1	BRN	A	
A\ —	2	ORG	A\	
B —	3	RED	B	
B\ —	4	YEL	B\	

TEMPERATURE RISE: MAX.80°C (MOTOR STANDSTILL; FOR 2 PHASE ENERGIZED)	AXIAL-FORCE Fa (N)	Fa=7
AMBIENT TEMPERATURE -10°~ 50°C [14°F ~ 122°F]	DISTANCE a (mm)	5 10 15 20
INSULATION RESISTANCE 100 MOhm (UNDER NORMAL TEMPERATURE AND HUMIDITY)	RADIAL-FORCE Fr (N)	58 36 26 20
INSULATION CLASS B 130° [266°F]		AXIAL RADIAL
DIELECTRIC STRENGTH 500VAC FOR 1 MIN. (BETWEEN THE MOTOR COILS AND THE MOTOR CASE)	SHAFT PLAY (mm)	0.075 0.025
AMBIENT HUMIDITY MAX. 85% (NO CONDENSATION)	AT LOAD MAX: (N)	10 5.0

FULL STEP 2 PHASE-Ex., WHEN FACING MOUNTING END (X)

STEP	A	B	A\	B\	
1	+	+	-	-	CCW
2	-	+	+	-	
3	-	-	+	+	
4	+	-	-	+	CW



5	change tol./revise draw.	16.05.17	A.S.
4	VALUE OF BACK-EMF	01.07.11	J.W.
3	INDUCTANCE+UL NO.	01.07.09	J.W.
REV	DESCRIPTION	DATE	DRN

Nanotec
PLUG & DRIVE

APVD	<i>S.Hα</i>	15.12.06
CHKD		
DRN	<i>J.W.</i>	29.06.06
SIGNATURE	DATE	

STEPPING MOTOR

DWG.NO
ST4209X1004-A