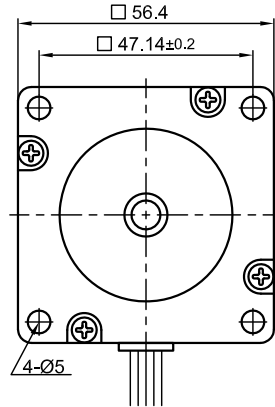
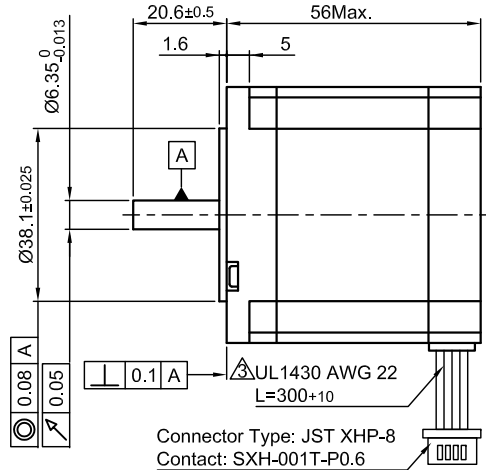


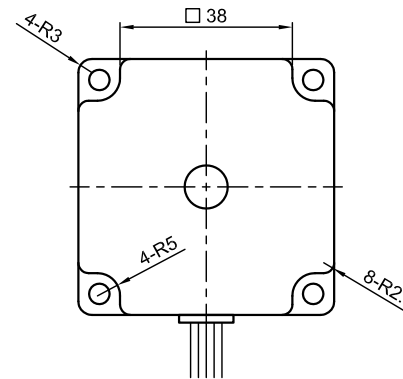
Front view and mounting



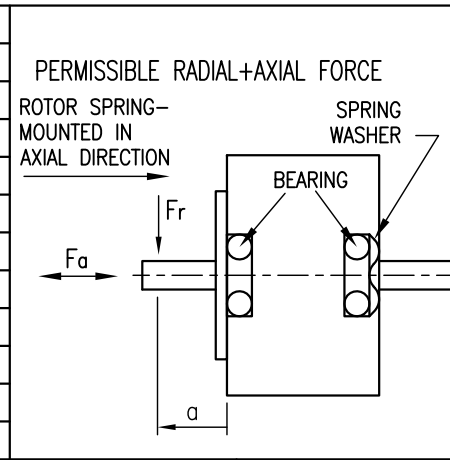
Side view



Rear view



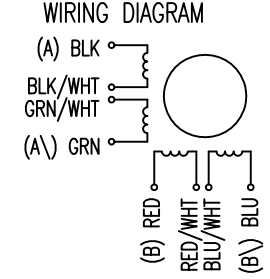
| SPECIFICATION | CONNECTION | UNIPOLAR OR BIPOLAR-1 WINDING | | BIPOLAR | |
|--|------------|-------------------------------|-----------------------|-----------------------|----------|
| | | SERIAL | PARALLEL | SERIAL | PARALLEL |
| VOLTAGE (VDC) | | 2.1 | | | |
| AMPS/PHASE | | 3.0 | 2.12 | 4.24 | |
| RESISTANCE/PHASE (Ohms)@25°C | | 0.7±10% | 1.4±10% | 0.35±10% | |
| INDUCTANCE/PHASE (mH) @1KHz | | 1.3±20% | 5.2±20% | 1.3±20% | |
| HOLDING TORQUE (Nm) [lb-in] | | 0.88 [7.8] Δ | Δ 1.24 [10.98] | Δ 1.24 [10.98] | |
| DETENT TORQUE (Nm) [lb-in] | | 0.04 [0.354] | | | |
| STEP ANGLE (°) | | 1.8 | | | |
| ACCURACY(NON-ACCUM) | | ±5% | | | |
| ROTOR INERTIA (Kg-m ²) [lb-in ²] | | 3.0x10 ⁻⁵ [0.102] | | | |
| WEIGHT (Kg) [lb] | | 0.7 [1.54] | | | |



| TYPE OF CONNECTION (EXTERN) | | | | MOTOR | | |
|-----------------------------|---------|--------|----------|----------------------------|---------|---------|
| UNIPOLAR | BIPOLAR | SERIAL | PARALLEL | CONNECTOR PIN NO. Δ | LEADS | WINDING |
| A | A | A | A | 1 | BLK | A |
| COM | A | | | 3 | BLK/WHT | |
| A\ | A | A\ | A\ | 2 | GRN/WHT | A\ |
| B | B | B | B | 4 | GRN | B |
| COM | B | | | 5 | RED | |
| B\ | B | B\ | B\ | 7 | RED/WHT | B\ |
| | | | | 6 | BLU/WHT | |
| | | | | 8 | BLU | |

FULL STEP 2 PHASE-Ex., WHEN FACING MOUNTING END (X)

| STEP | A | B | A\ | B\ | CCW | CW |
|------|---|---|----|----|-----|----|
| 1 | + | + | - | - | | |
| 2 | - | + | + | - | | |
| 3 | - | - | + | + | | |
| 4 | + | - | - | + | | |



| | | |
|--|---------------------|--------------|
| TEMPERATURE RISE: MAX.80°C (MOTOR STANDSTILL; FOR 2 PHASE ENERGIZED) | AXIAL-FORCE Fa (N) | Fa=15 |
| AMBIENT TEMPERATURE -10~ 50°C [14°F ~ 122°F] | DISTANCE a (mm) | 5 10 15 20 |
| INSULATION RESISTANCE 100 MOhm (UNDER NORMAL TEMPERATURE AND HUMIDITY) | RADIAL-FORCE Fr (N) | 130 90 70 52 |
| INSULATION CLASS B 130° [266°F] | | AXIAL RADIAL |
| DIELECTRIC STRENGTH 500VAC FOR 1 MIN. (BETWEEN THE MOTOR COILS AND THE MOTOR CASE) | SHAFT PLAY (mm) | 0.08 0.02 |
| AMBIENT HUMIDITY MAX. 85% (NO CONDENSATION) | AT LOAD MAX: (N) | 4.5 4.5 |

| | | | |
|-----|--------------------------|----------|------|
| 4 | HOLD.TOR.+DELE. BACK-EMF | 18.10.13 | J.D. |
| 3 | NEW UL NO. | 28.07.09 | J.W. |
| 2 | PIN-ASSIGNMENT | 08.01.08 | J.W. |
| REV | DESCRIPTION | DATE | APVD |

Nanotec
PLUG & DRIVE

ST5918M3008-A

| | | | |
|------------|-----------|-------|----------|
| SCALE FREE | APVD | J.Ha. | 19.03.07 |
| X ±0.5 | CHKD | | |
| 1PL ±0.2 | DRN | J.W. | 21.11.06 |
| 2PL ±0.1 | SIGNATURE | | DATE |
| ANGLE ±30' | | | |

STEPPING MOTOR

DWG.NO ST5918M3008-A