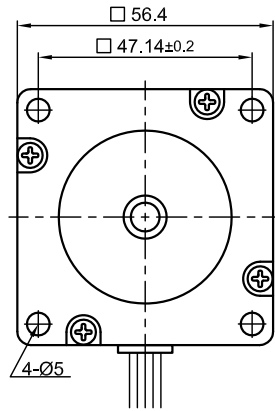
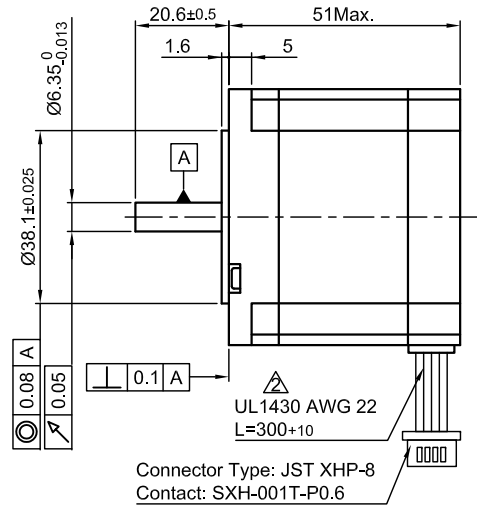


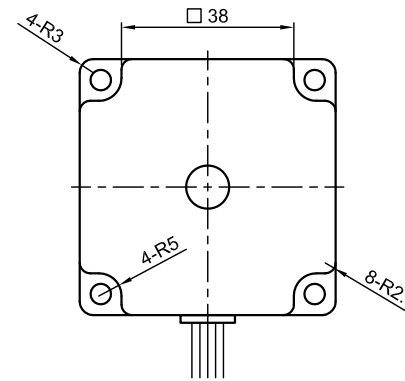
Front view and mounting



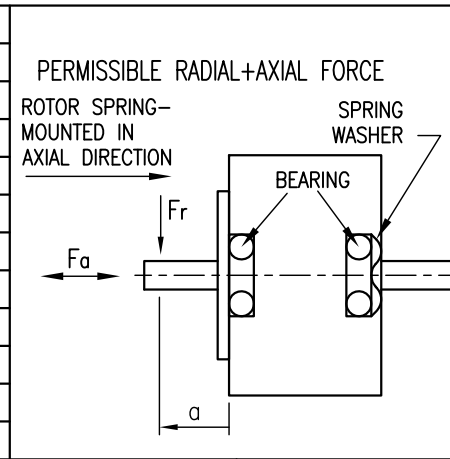
Side view



Rear view



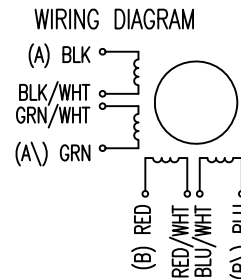
SPECIFICATION	CONNECTION	UNIPOLAR OR BIPOLAR-1 WINDING		BIPOLAR	
		SERIAL	PARALLEL	SERIAL	PARALLEL
VOLTAGE (VDC)		6.2			
AMPS/PHASE		1.0		0.71	1.41
RESISTANCE/PHASE (Ohms)@25°C		6.2 ± 10%		12.4 ± 10%	3.1 ± 10%
INDUCTANCE/PHASE (mH) @1KHz		7.5 ± 20% Δ		30 ± 20% Δ	7.5 ± 20% Δ
HOLDING TORQUE (Nm) [lb-in]		0.7 [6.25] Δ		0.99 [8.76] Δ	0.99 [8.76] Δ
DETENT TORQUE (Nm) [lb-in]		0.03 [0.266]			
STEP ANGLE (°)		1.8			
ACCURACY(NON-ACCUM)		±5%			
ROTOR INERTIA (Kg-m ²) [lb-in ²]		2.75x10 ⁻⁵ [0.094]			
WEIGHT (Kg) [lb]		0.65 [1.43]			



TYPE OF CONNECTION (EXTERN)				MOTOR		
UNIPOLAR	BIPOLAR			CONNECTOR PIN NO.	LEADS	WINDING
	1WINDING	SERIAL	PARALLEL			
A	A	A	A	1	BLK	A
COM	A			3	BLK/WHT	
A\		A\	A\	2	GRN/WHT	A\
B	B	B	B	4	GRN	B
COM	B			5	RED	
B\		B\	B\	7	RED/WHT	B\
				6	BLU/WHT	
				8	BLU	

FULL STEP 2 PHASE-Ex.,
WHEN FACING MOUNTING END (X)

STEP	A	B	A\	B\	CCW	CW
1	+	+	-	-	↓	↑
2	-	+	+	-	↓	↑
3	-	-	+	+	↓	↑
4	+	-	-	+	↓	↑



TEMPERATURE RISE: MAX.80°C (MOTOR STANDSTILL; FOR 2 PHASE ENERGIZED)		AXIAL-FORCE Fa (N)		Fa=15	
AMBIENT TEMPERATURE -10~ 50°C [14°F ~ 122°F]		DISTANCE a (mm)		5	10
INSULATION RESISTANCE 100 MOhm (UNDER NORMAL TEMPERATURE AND HUMIDITY)		RADIAL-FORCE Fr (N)		130	90
INSULATION CLASS B 130° [266°F]				70	52
DIELECTRIC STRENGTH 500VAC FOR 1 MIN. (BETWEEN THE MOTOR COILS AND THE MOTOR CASE)		SHAFT PLAY (mm)		AXIAL	RADIAL
AMBIENT HUMIDITY MAX. 85% (NO CONDENSATION)		AT LOAD MAX: (N)		0.08	0.02
				4.5	4.5

4	NEW VALUE OF INDUCTANCE	13.12.13	J.D.
3	HOLD.TOR.+DELE. BACK-EMF	18.11.13	J.D.
2	NEW UL NO.	28.07.09	J.W.
REV	DESCRIPTION	DATE	APVD

Nanotec
PLUG & DRIVE

ST5918S1008-A

SCALE	FREE	APVD	S.Ha.	19.03.07
X	±0.5	CHKD		
1PL	±0.2	DRN	J.W.	21.11.06
2PL	±0.1	SIGNATURE		DATE
ANGLE	±30'			

STEPPING MOTOR

DWG.NO ST5918S1008-A