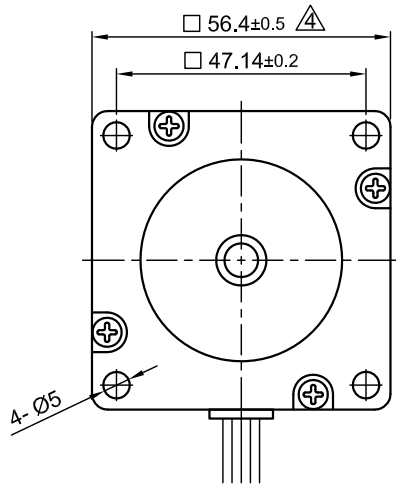
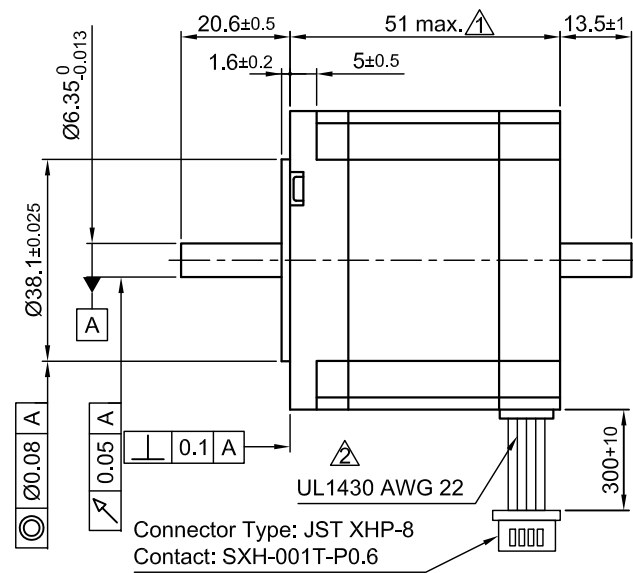


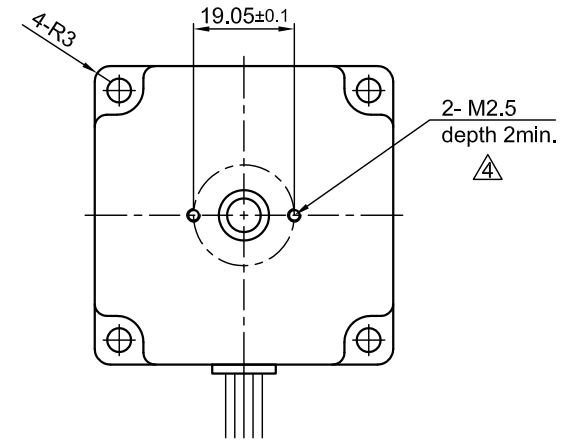
Front view and mounting



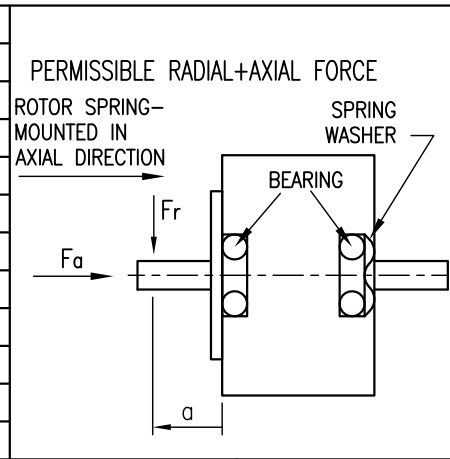
Side view



Rear view



SPECIFICATION	CONNECTION	UNIPOLAR OR BIPOLAR-1 WINDING	BIPOLAR	
			SERIAL	PARALLEL
VOLTAGE (VDC)		3.0		
AMPS/PHASE		2.0	1.41	2.82
RESISTANCE/PHASE (Ohms)@25°C		1.5±10%	3.0±10%	0.75±10%
INDUCTANCE/PHASE (mH) @1KHz		2.6±20%	10.4±20%	2.6±20%
HOLDING TORQUE (Nm) [lb-in]		0.7 [6.25] Δ	Δ 0.99 [8.76]	Δ 0.99 [8.76]
DETENT TORQUE (Nm) [lb-in]		0.03 [0.266]		
STEP ANGLE (°)		1.8		
ACCURACY(NON-ACCUM)		±5%		
ROTOR INERTIA (Kg-m ²) [lb-in ²]		2.75x10 ⁻⁵ [0.094]		
WEIGHT (Kg) [lb]		0.65 [1.43]		

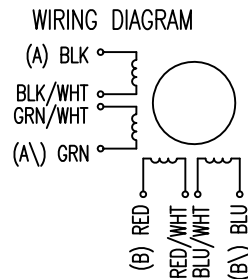


TEMPERATURE RISE: MAX.80°C (MOTOR STANDSTILL; FOR 2 PHASE ENERGIZED)	AXIAL-FORCE Fa (N)	Fa=15			
AMBIENT TEMPERATURE -10~ 50°C [14°F ~ 122°F]	DISTANCE a (mm)	5	10	15	20
INSULATION RESISTANCE 100 MOhm (UNDER NORMAL TEMPERATURE AND HUMIDITY)	RADIAL-FORCE Fr (N)	130	90	70	52
INSULATION CLASS B 130° [266°F]		AXIAL		RADIAL	
DIELECTRIC STRENGTH 500VAC FOR 1 MIN. (BETWEEN THE MOTOR COILS AND THE MOTOR CASE)	SHAFT PLAY (mm)	0.08		0.02	
AMBIENT HUMIDITY MAX. 85% (NO CONDENSATION)	AT LOAD MAX: (N)	4.5		4.5	

TYPE OF CONNECTION (EXTERN)				MOTOR		
UNIPOLAR	BIPOLAR 1WINDING	BIPOLAR SERIAL	BIPOLAR PARALLEL	CONNECTOR PIN NO.	LEADS	WINDING
A	A	A	A	1	BLK	A
COM	A			3	BLK/WHT	
A\		A\	A\	2	GRN/WHT	A\
B	B	B	B	4	GRN	B
COM	B			5	RED	
B\		B\	B\	7	RED/WHT	B\
				6	BLU/WHT	
				8	BLU	

FULL STEP 2 PHASE-Ex., WHEN FACING MOUNTING END (X)

STEP	A	B	A\	B\	CCW	CW
1	+	+	-	-	↓	↑
2	-	+	+	-		
3	-	-	+	+	↑	↓
4	+	-	-	+		



4	revise draw./ change tol.	02.11.16	A.S.
3	HOLD.TOR.+DELE. BACK-EMF	18.11.13	J.D.
2	NEW UL NO.	28.07.09	J.W.
REV	DESCRIPTION	DATE	DRN

Nanotec[®]
 PLUG & DRIVE

Surface specification DIN ISO 1302	General tolerances DIN ISO 2768- cH	Work piece edge DIN ISO 13715
---------------------------------------	--	----------------------------------

APVD	<i>S.Ha.</i>	19.03.07
CHKD		
DRN	<i>J.W.</i>	21.11.06
SIGNATURE		DATE

STEPPING MOTOR
 DWG.NO
ST5918S2008-B