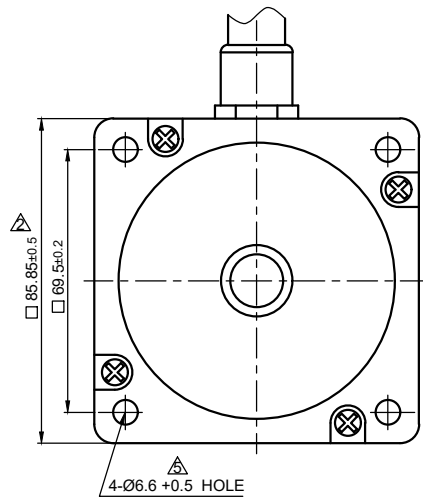
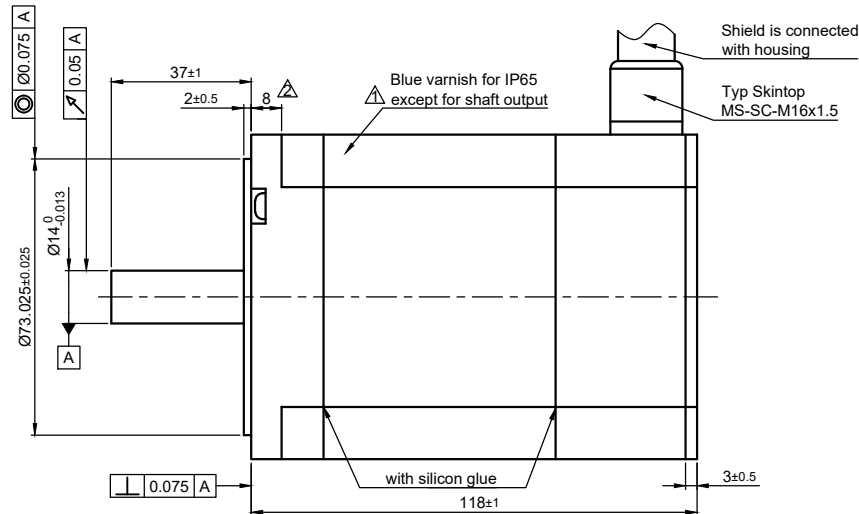


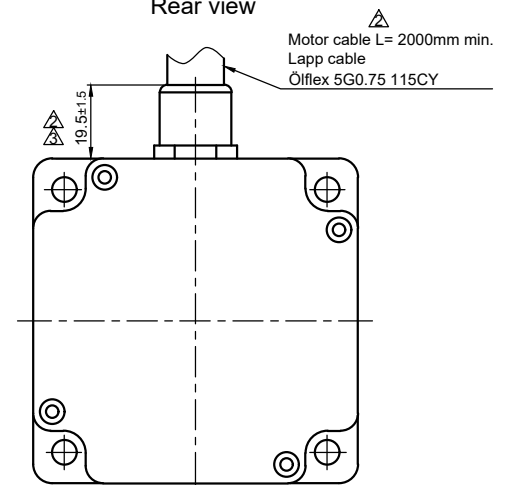
Front view and mounting



Side view



Rear view

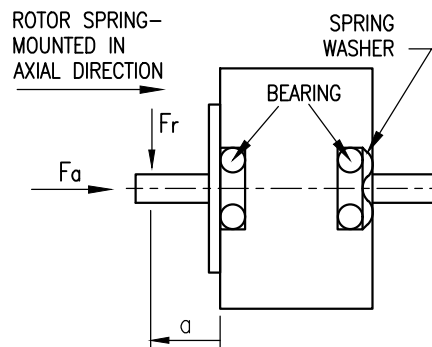


CONNECTION

BIPOLAR
PARALLEL

SPECIFICATION *	
VOLTAGE (VDC)	2.1
AMPS/PHASE	6.36
RESISTANCE/PHASE (Ohms)@25°C	0.40±15% Δ
INDUCTANCE/PHASE (mH) @1KHz	3.0±20%
HOLDING TORQUE (Nm) [lb-in]	5.94 [52.57]
STEP ANGLE (°)	1.8
STEP ACCURACY (NON-ACCUM)	±5% Δ
ROTOR INERTIA (Kg-m ²) [lb-in ²]	2.7x10 ⁻⁴ [0.923]
WEIGHT (Kg) [lb]	3.4 [7.5] Δ

PERMISSIBLE RADIAL+AXIAL FORCE



M16 MOTOR

CABLE NO.	ASSIGNMENT
1	A
2	A\
3	B
4	B\
GN/YE	PE
HOUSING	SHIELDING

TEMPERATURE RISE: MAX.80°C (MOTOR STANDSTILL; FOR 2 PHASE ENERGIZED)	AXIAL-FORCE Fa (N)	Fa=65			
AMBIENT TEMPERATURE -10°~ 50°C [14°F ~ 122°F]	DISTANCE a (mm)	5	10	15	20
INSULATION RESISTANCE 100 MOhm (UNDER NORMAL TEMPERATURE AND HUMIDITY)	RADIAL-FORCE Fr (N)	535	355	256	200
INSULATION CLASS B 130° [266°F]			AXIAL	RADIAL	
DIELECTRIC STRENGTH 500VAC FOR 1 MIN. (BETWEEN THE MOTOR COILS AND THE MOTOR CASE)	SHAFT PLAY (mm)	0.075	0.025		
AMBIENT HUMIDITY MAX. 85% (NO CONDENSATION)	AT LOAD MAX: (N)	10	5.0		

Δ *Specification only applies to motor.
For additional components (encoder, gears, brakes), please see separate data sheet.

5	add text, clear description	27.04.17	A.S.	Nanotec PLUG & DRIVE	APVD	S.H.	22.07.08	STEPPER MOTOR IN PROTECTION		
4	updt. resistance	06.04.17	G.S.		CHKD					
3	change tolerance/remove detent tor.	09.03.17	A.S.	Surface specification DIN ISO 1302	General tolerances DIN ISO 2768- cH	Work piece edge DIN ISO 13715	DRN	J.W.	22.07.08	DWG.NO
REV	DESCRIPTION	DATE	DRN				SIGNATURE	DATE		AP8918M6404