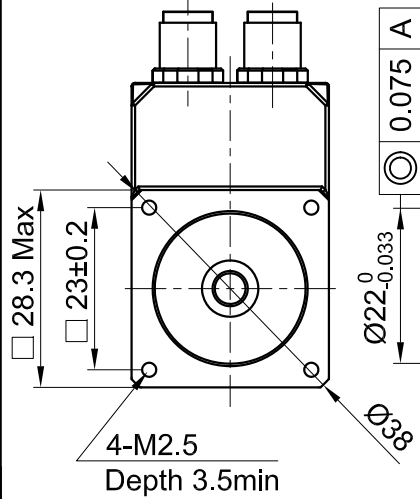
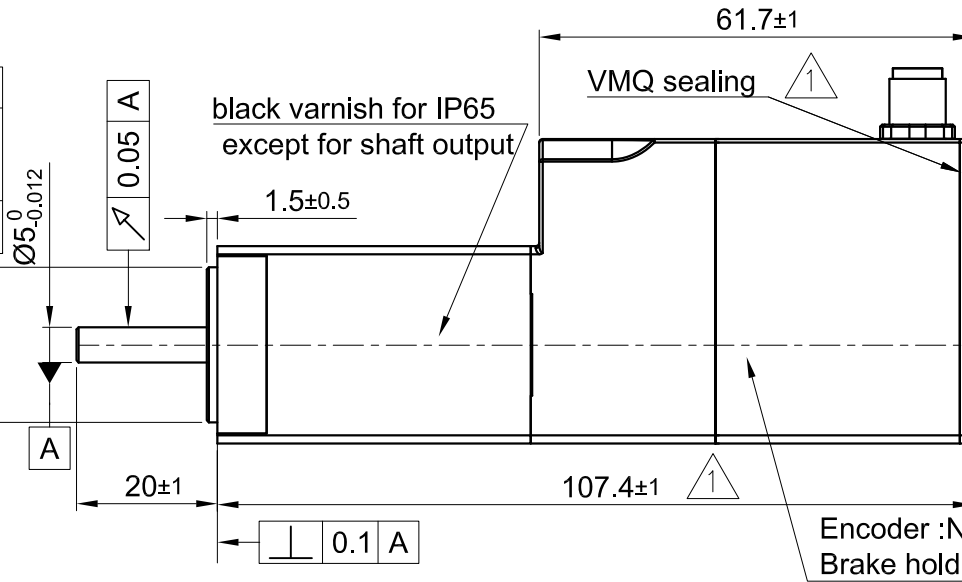


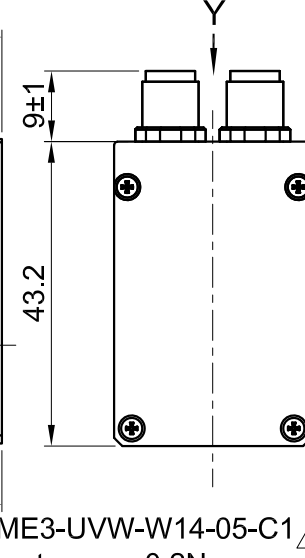
Front view and mounting



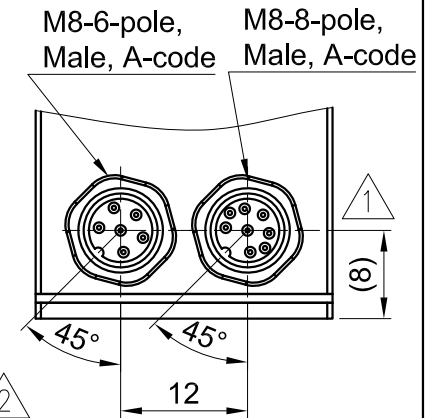
Side view



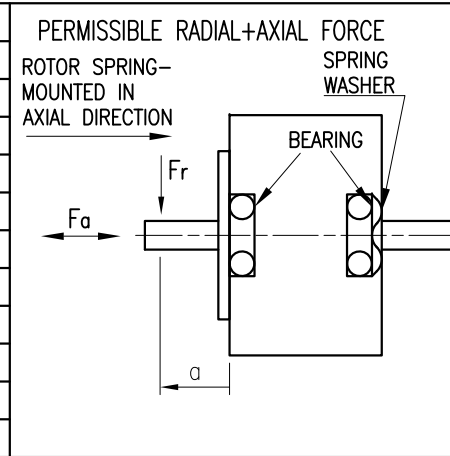
Rear view



Y view



SPECIFICATION	
MAXIMAL OPERATING VOLTAGE (VDC)	30 <sup>3</sup>
VOLTAGE (VDC)	2.85
AMPS/PHASE	1.5
RESISTANCE/PHASE (Ohms)@25°C	1.9±15%
INDUCTANCE/PHASE (mH) @1KHz	1.9±20%
HOLDING TORQUE (Nm)	0.18
STEP ANGLE (°)	1.8
STEP ACCURACY(NON-ACCUM)	±5%
ROTOR INERTIA (Kg-m <sup>2</sup> )	1.8x10 <sup>-6</sup>
WEIGHT (Kg)	0.34 <sup>2</sup>



M8-6 pole Motor		M8-8 pole Encoder	
PIN. NO.	ASSIGNMENT	PIN NO.	ASSIGNMENT
1	A\	1	A
2	A	2	A\
3	B	3	B
4	B\	4	B\
5	Brake +24V~30V <sup>3</sup>	5	GND
6	BRAKE GND	6	I\
		7	I
		8	Vcc (+5V)
		HOUSING	GND

TEMPERATURE RISE: MAX.80°C (MOTOR STANDSTILL; FOR 2 PHASE ENERGIZED)	AXIAL-FORCE Fa (N)	Fa=15
AMBIENT TEMPERATURE -10~ 50°C [14°F ~ 122°F]	DISTANCE a (mm)	5 10 15 20
INSULATION RESISTANCE 100 MOhm (UNDER NORMAL TEMPERATURE AND HUMIDITY)	RADIAL-FORCE Fr (N)	58 36 26 20
INSULATION CLASS B 130° [266°F]		AXIAL RADIAL
DIELECTRIC STRENGTH 500VAC FOR 1 MIN. (BETWEEN THE MOTOR COILS AND THE MOTOR CASE)	SHAFT PLAY (mm)	0.08 0.02
AMBIENT HUMIDITY MAX. 85% (NO CONDENSATION)	AT LOAD MAX: (N)	4.5 4.5

FULL STEP 2 PHASE-Ex., WHEN FACING MOUNTING END (X)

STEP	A	B	A\	B\	CCW
1	+	+	-	-	↓
2	-	+	+	-	↑
3	-	-	+	+	↓
4	+	-	-	+	↑

3	Update Description	14.07.23	L X	<b>Nanotec</b> PLUG & DRIVE	APVD	<i>M.H.</i>	27.11.20	<b>STEPPER MOTOR IN PROTECTION</b>
2	Update Description/Weight	03.02.23	C J		CHKD	<i>L W</i>	27.11.20	
1	Correct the size	30.11.21	C J	Surface specification DIN ISO 1302	DRN	<i>SYF</i>	27.11.20	DWG.NO
REV	DESCRIPTION	DATE	DRN	General tolerances DIN ISO 2768-cH		SIGNATURE	DATE	AS2818L1504-EB
				Work piece edge DIN ISO 13715				