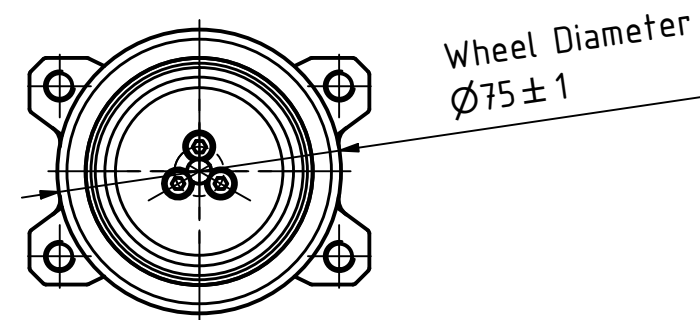
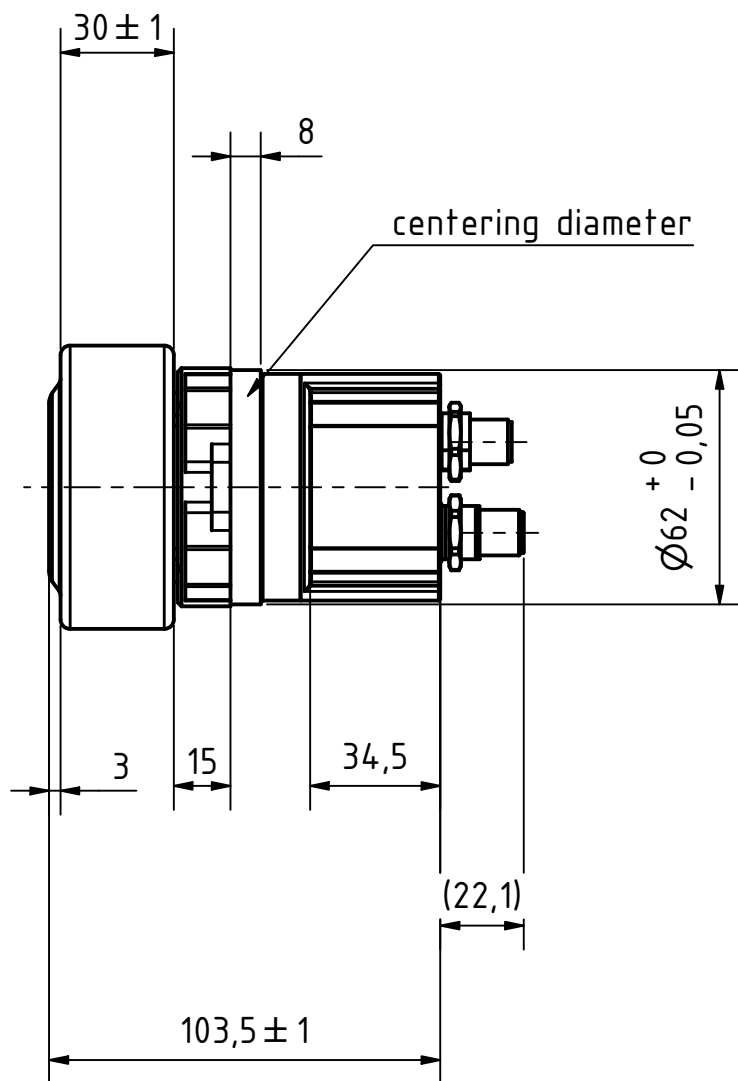
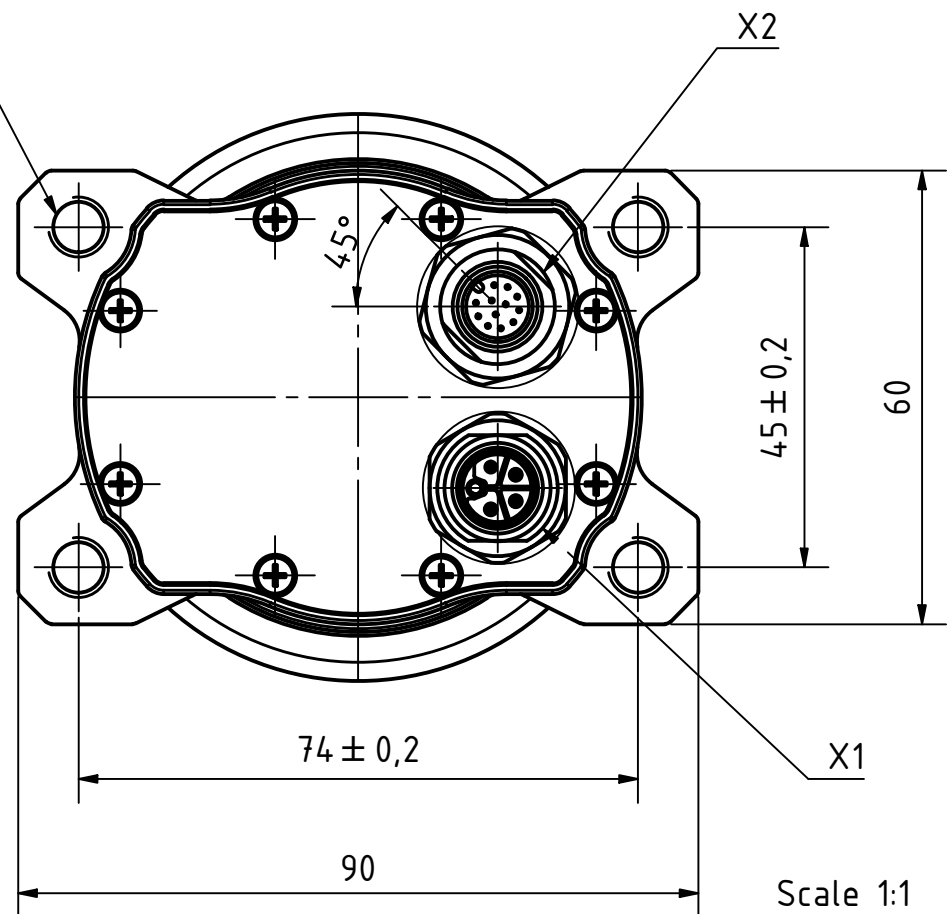
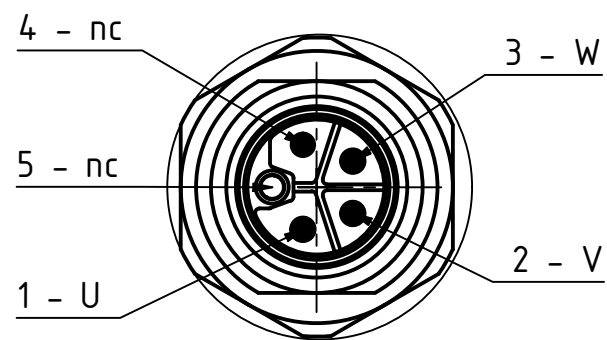


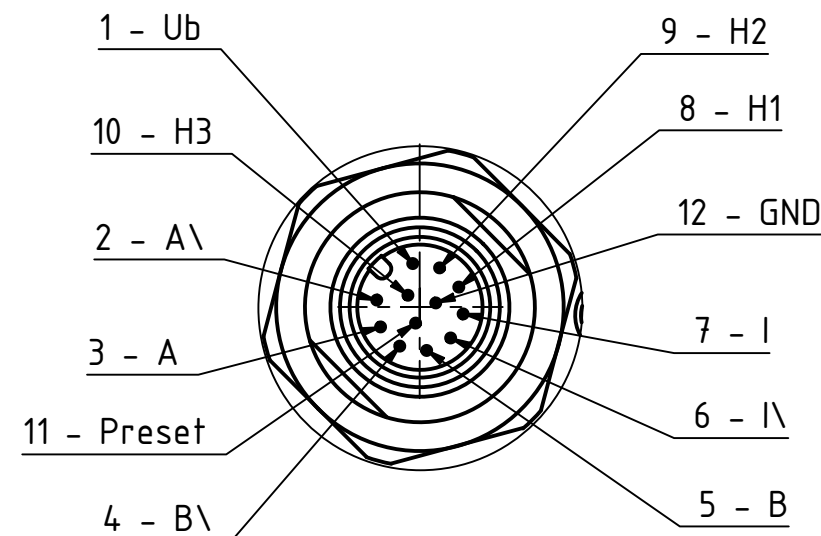
4x M8 ∇ 12



X1
M12/ 5-Pole
L-Coding male



X2
M12/ 12-Pole
A-Coding male



Missing dimensions see in Step File

ISO 8015	ISO 1302	ISO 2768 mK	ISO 13715	Material:	Weight: ~1.7 kg
			Date	WD07530-42xx-50-E3	
			Name		
		Drawn	07.06.2023	Kaiming_C	
		Reviewed	02.11.2023	Kolev_I	
		Released	02.11.2023	Kolev_I	
00				20002004	Scale: 1 : 2
REV	Rev. Text	Name	Date	State: Released	A3 Page 1



System		12	15	21	26
WD07530-42xx-50-E3					
Output Torque - Rated / Max.	Nm	4.88 / 14.64	6.41 / 19.23	8.56 / 25.68	10.63 / 26.28
Speed Rated	m/s	1.2	0.9	0.7	0.5
Load Capacity	kg	200			
Inertia (on motor shaft)	kg m ² x 10 ⁻⁶	24.3	23.6	23.0	22.8
Protection Class		IP54			
Rated Voltage	V DC	48			
Current - Rated / Peak	A	5.9 / 17.7			5.9 / 14.6
Speed Rated	rpm				
No. of Poles		20			
Gearbox Reduction Ratio		11.76 (576/49)	15.45 (12996/841)	20.64 (1197/58)	25.62 (333/13)
Mechanical Efficiency	%	~83			
Backlash Max.	°	1			
Wheel Material		Vulkollan 92 Shore A			
Operating Voltage	V DC	5			
Resolution	cpr / ppr	4096 / 16384			
Interface		incremental			
Ambient Temperature	°C	-15 ... +40			
Ambient Humidity Max. (non condensing)	%	85			