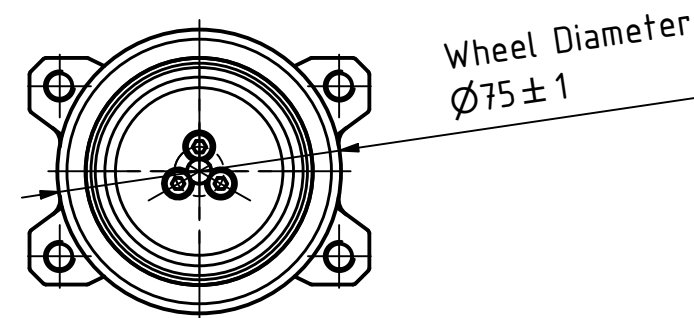
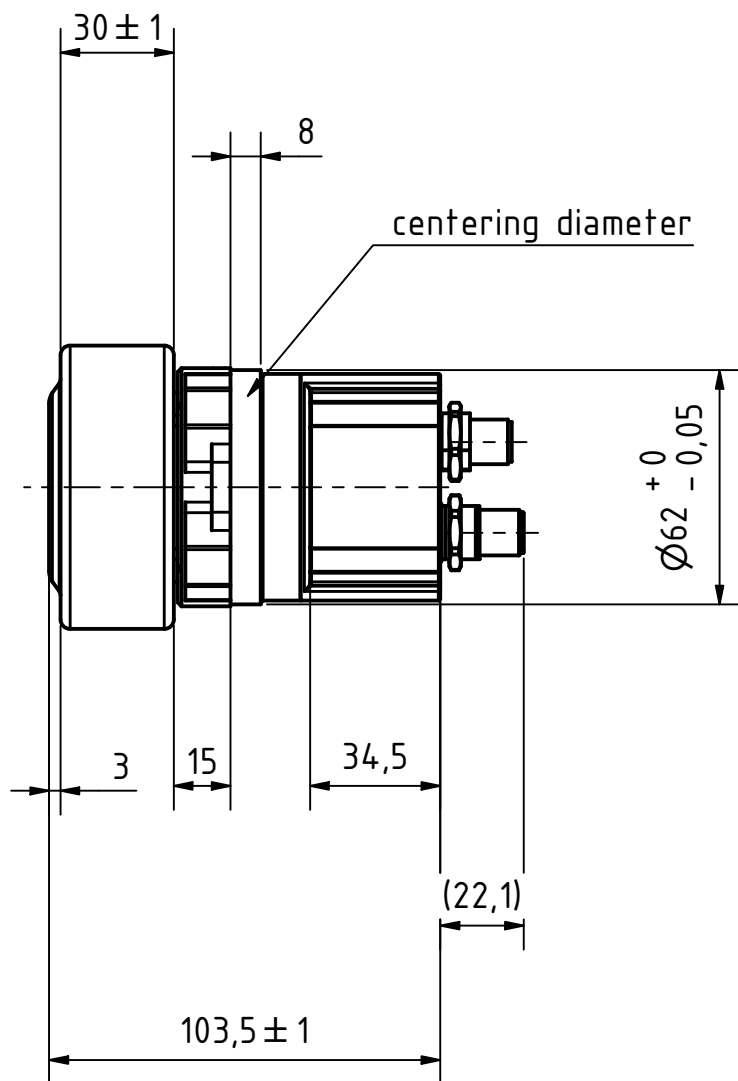
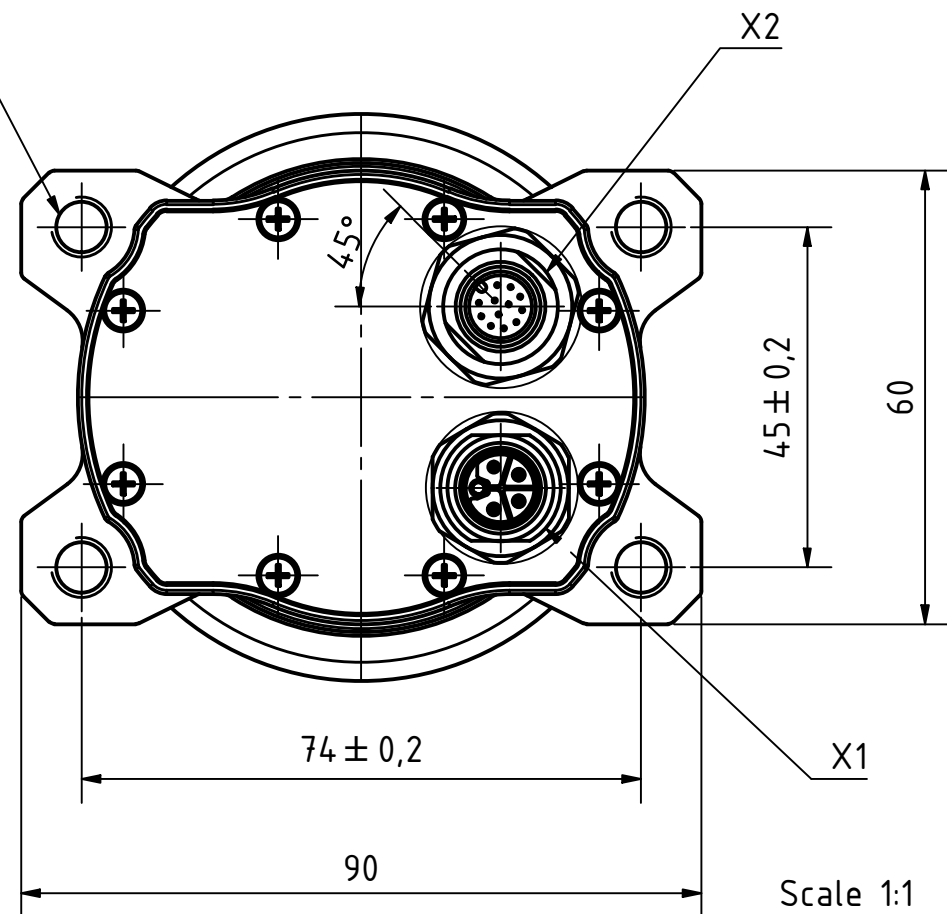
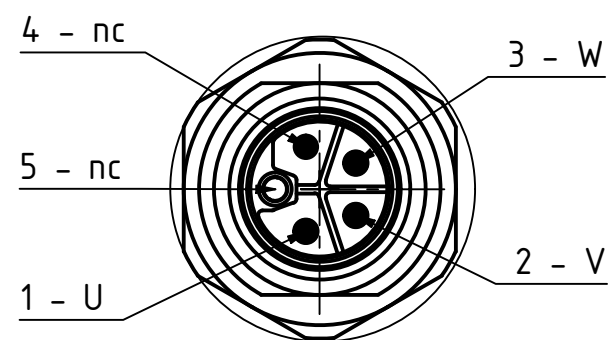


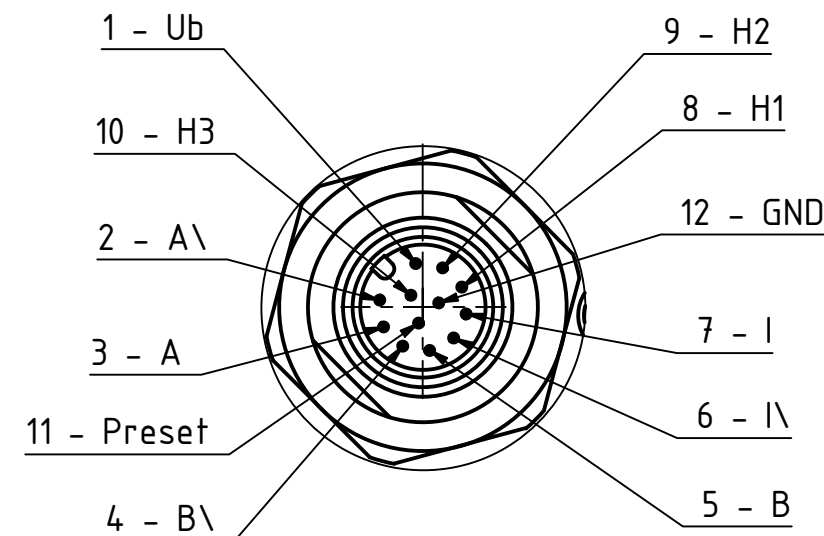
4x M8  $\nabla$ 12



X1  
M12/ 5-Pole  
L-Coding male



X2  
M12/ 12-Pole  
A-Coding male



Missing dimensions see in Step File

ISO 8015	ISO 1302	ISO 2768 c	Q1	ISO 13715	Material:	Weight: ~1.7 kg	
			Date	Name	WD07530-42xx-50-E3		
			Drawn	07.06.2023			Kaiming_C
			Reviewed	06.12.2024			Kolev_I
			Released	06.12.2024	Kolev_I		
01	Drawing Standard changed	Kaiming_C	30.01.2026	20002004		Scale: 1 : 2	
REV	Rev. Text	Name	Date	State: Released		A3 Page 1	



		12	15	21	26
System	WD07530-42xx-50-E3				
Output Torque - Rated / Max.	Nm	4.88 / 14.64	6.41 / 19.23	8.56 / 25.68	10.63 / 26.28
Speed Rated	m/s	1.2	0.9	0.7	0.5
Load Capacity	kg	200			
Inertia (on motor shaft)	kg m <sup>2</sup> x 10 <sup>-6</sup>	24.3	23.6	23.0	22.8
Protection Class		IP54			
Motor	Rated Voltage	V DC 48			
Current - Rated / Peak	A	5.9 / 17.7			5.9 / 14.6
Speed Rated	rpm	3500			
No. of Poles		20			
Mechanical	Gearbox Reduction Ratio	11.76 (576/49)	15.45 (12996/841)	20.64 (1197/58)	25.62 (333/13)
Mechanical Efficiency	%	~83			
Backlash Max.	°	1			
Wheel Material		Vulkollan 92 Shore A			
Encoder	Operating Voltage	V DC 5			
Resolution	cpr / ppr	4096 / 16384			
Interface		incremental			
Ambient Temperature	°C	-15 ... +40			
Ambient Humidity Max. (non condensing)	%	85			