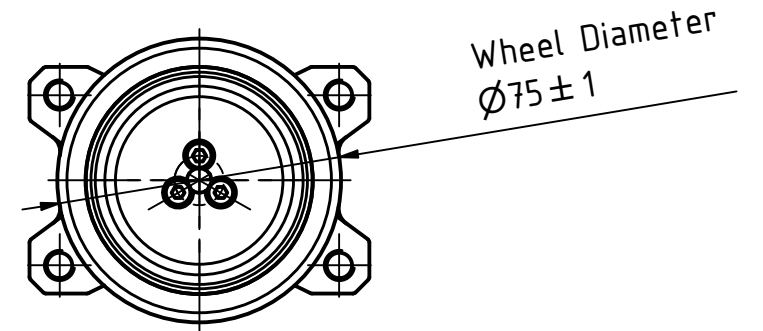
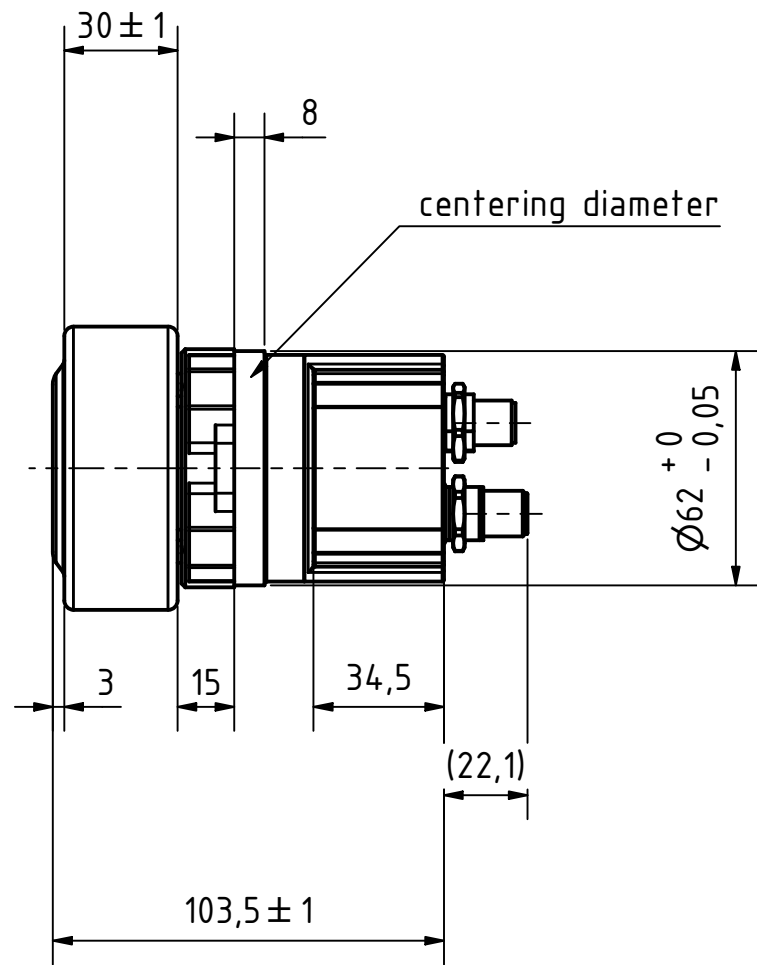
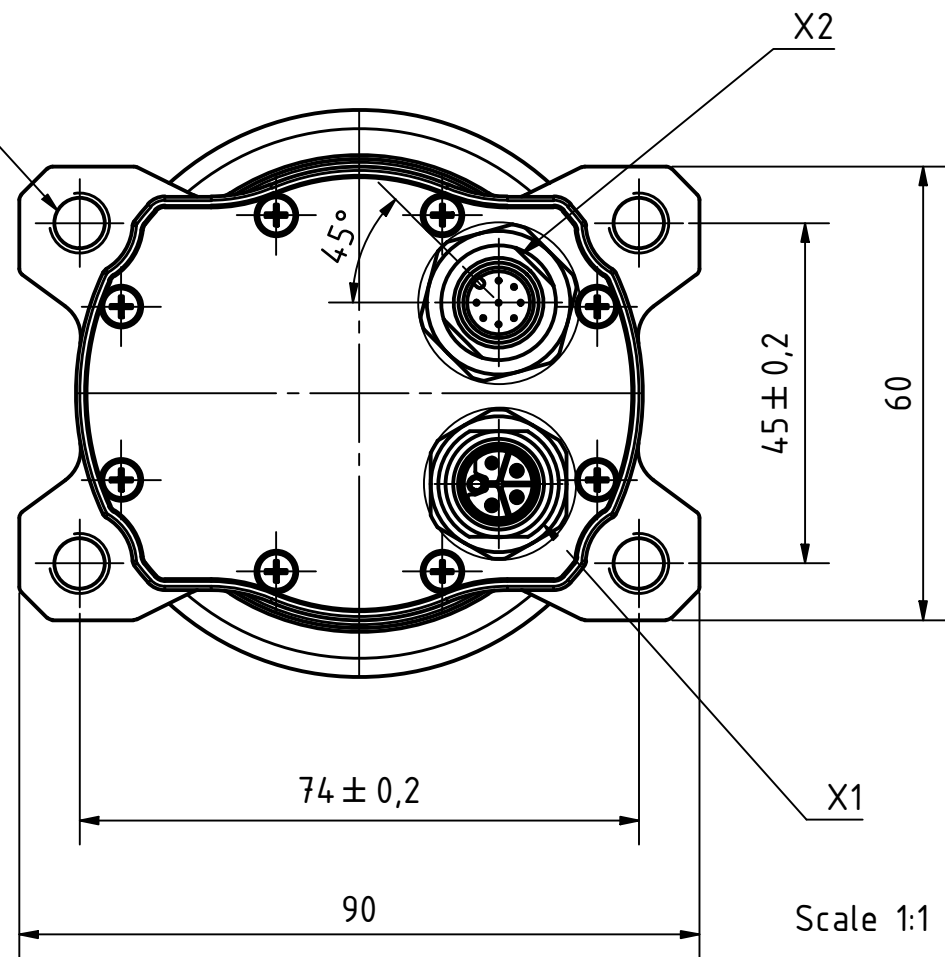
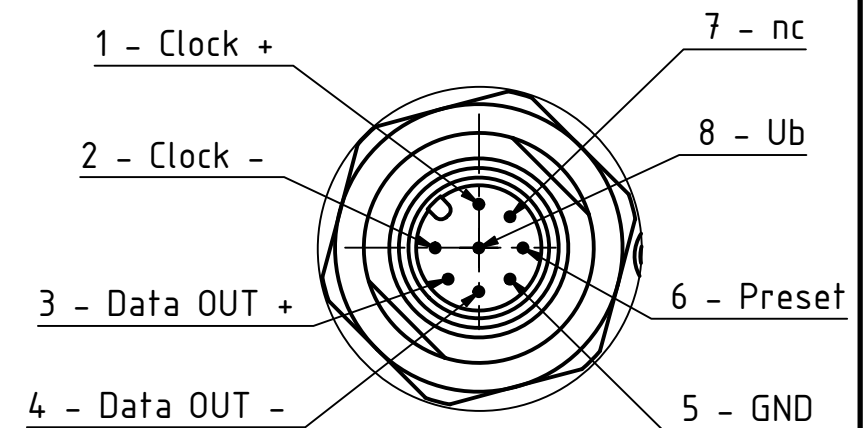
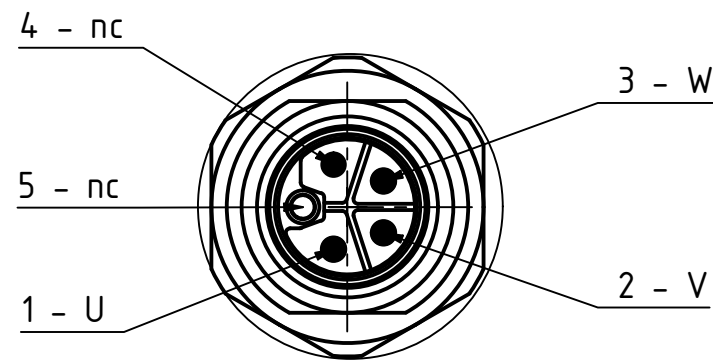


4x M8  $\nabla$ 12



X1  
M12/ 5-Pole  
L-Coding male

X2  
M12/ 8-Pole  
A-Coding male



Missing dimensions see in Step File

ISO 8015	ISO 1302	ISO 2768 mK	ISO 13715	Material:	Weight: ~1.7 kg
			Date	WD07530-42xx-50-E4	
			Name		
			Drawn	20002006	
			Reviewed	Scale: 1 : 2	
			Released	A3 Page 1	
REV	Rev. Text	Name	Date	State: Released	Rev: 00

		12	15	21	26	
System	WD07530-42xx-50-E4					
	Output Torque - Rated / Max.	Nm	4.88 / 14.64	6.41 / 19.23	8.56 / 25.68	10.63 / 26.28
	Speed Rated	m/s	1.2	0.9	0.7	0.5
	Load Capacity	kg	200			
	Inertia (on motor shaft)	kg m <sup>2</sup> x 10 <sup>-6</sup>	24.3	23.6	23.0	22.8
	Protection Class		IP54			
Motor	Rated Voltage	V DC	48			
	Current - Rated / Peak	A	5.9 / 17.7		5.9 / 14.6	
	Speed Rated	rpm	3500			
	No. of Poles		20			
Mechanical	Gearbox Reduction Ratio		11.76 (576/49)	15.45 (12996/841)	20.64 (1197/58)	25.62 (333/13)
	Mechanical Efficiency	%	~83			
	Backlash Max.	°	1			
	Wheel Material		Vulkollan 92 Shore A			
Encoder	Operating Voltage	V DC	9 ... 30			
	Resolution	bit	17			
	Interface		absolute			
Envir	Ambient Temperature	°C	-15 ... +40			
	Ambient Humidity Max. (non condensing)	%	85			