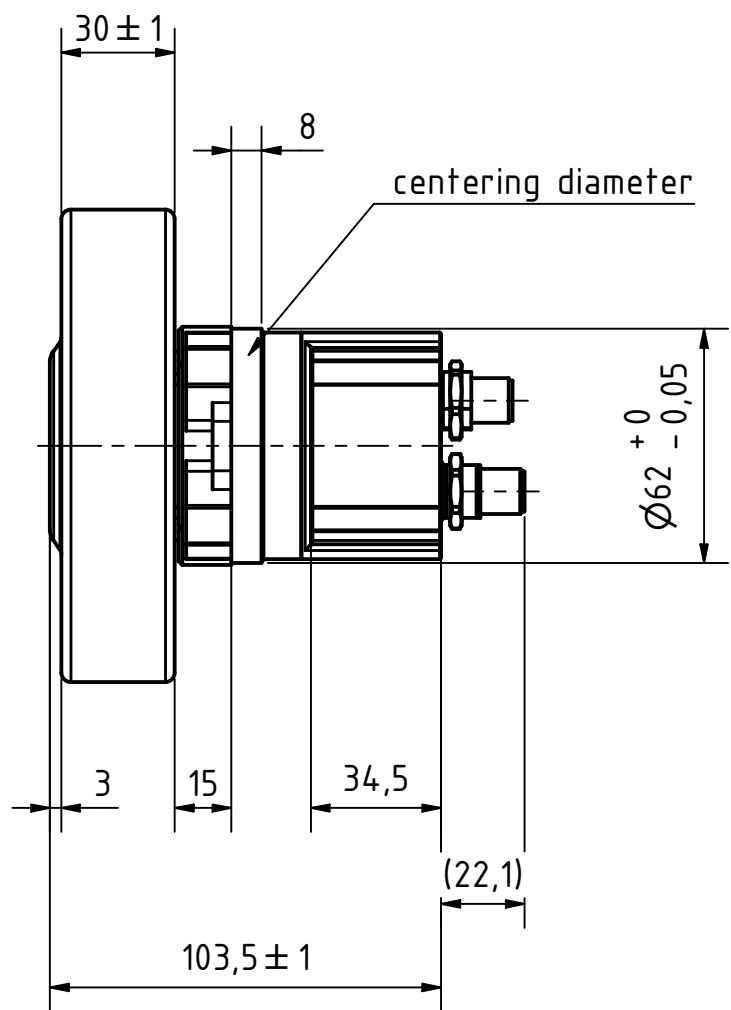
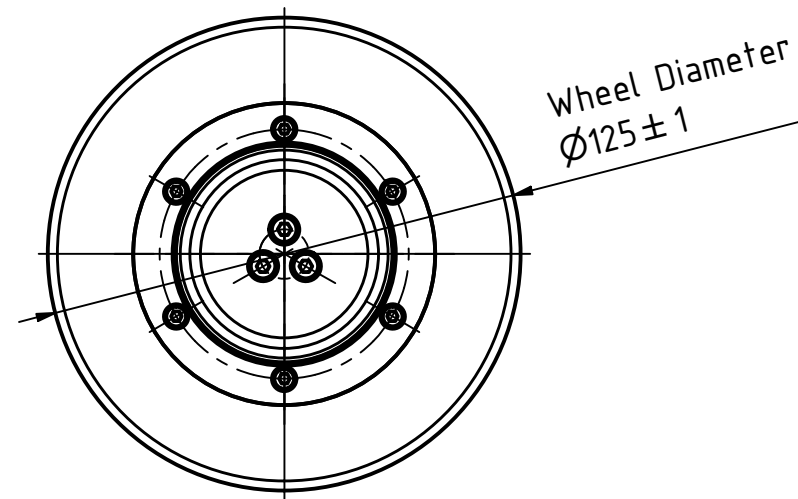


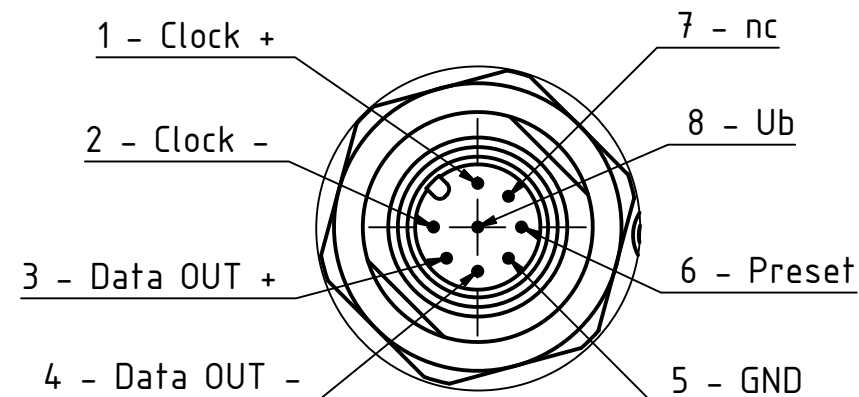
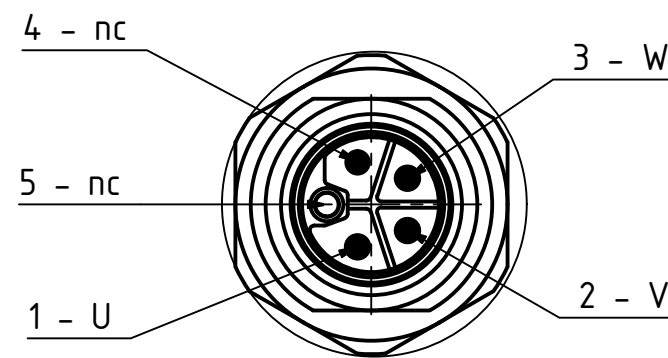
Scale 1:1



X1
M12/ 5-Pole
L-Coding male



X2
M12/ 8-Pole
A-Coding male



Missing dimensions see in Step File

ISO 8015	ISO 1302	ISO 2768 mK	ISO 13715	Material:	Weight: ~1.7 kg
			Date	WD12530-42xx-50-E4	
			Drawn	20002145	
			Reviewed	Scale: 1 : 2	
			Released	A3 Page 1	
REV	Rev. Text	Name	Date	State: Released	Rev: 00 CONFIDENTIAL

		12	15	21	26	
System	WD12530-42xx-50-E4					
	Output Torque - Rated / Max.	Nm	4.88 / 14.64	6.41 / 19.23	8.56 / 25.68	10.63 / 26.28
	Speed Rated	m/s	1.9	1.5	1.1	0.9
	Load Capacity	kg	200			
	Inertia (on motor shaft)	kg m ² x 10 ⁻⁶	30.4	27.1	25.0	24.1
Motor	Protection Class	IP54				
	Rated Voltage	V DC	48			
	Current - Rated / Peak	A	5.9 / 17.7		5.9 / 14.6	
	Speed Rated	rpm	3500			
	No. of Poles	20				
Mechanical	Gearbox Reduction Ratio		11.76 (576/49)	15.45 (12996/841)	20.64 (1197/58)	25.62 (333/13)
	Mechanical Efficiency	%	~83			
	Backlash Max.	°	1			
Encoder	Wheel Material	Vulkollan 92 Shore A				
	Operating Voltage	V DC	9 ... 30			
	Resolution	bit	17			
	Interface	absolute				
Envir.	Ambient Temperature	°C	-15 ... +40			
	Ambient Humidity Max. (non condensing)	%	85			