

# PD6-E/EB

## Motor with integrated controller – PD6

The intelligent compact drives from Nanotec combine motor, controller and encoder in a space-saving package. With 80 mm flange size and a rated power of 942 W, the PD6-EB80C is the most powerful brushless DC motor of this product family. The PD6-E891 is also available in a stepper motor version with a holding torque of up to 10 Nm and 86 mm flange size (NEMA 34).

### Maximum performance

In combination with extended features such as the acceleration feed forward and jerk-limited ramps, the field-oriented torque, speed and position control provides optimum dynamic performance and thus cycle time.

### Flexible control

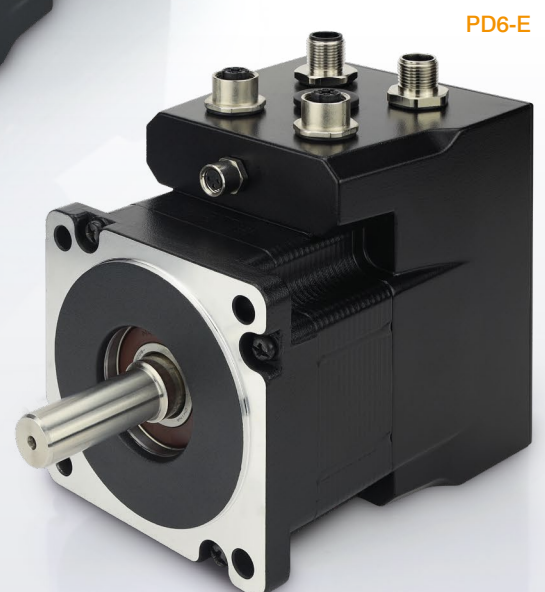
The PD6 can be controlled via fieldbus, clock/direction or digital/analog inputs. This makes it easy to incorporate the motor into various control concepts. The integrated sequence control enables stand-alone applications as well.

### Simple programming

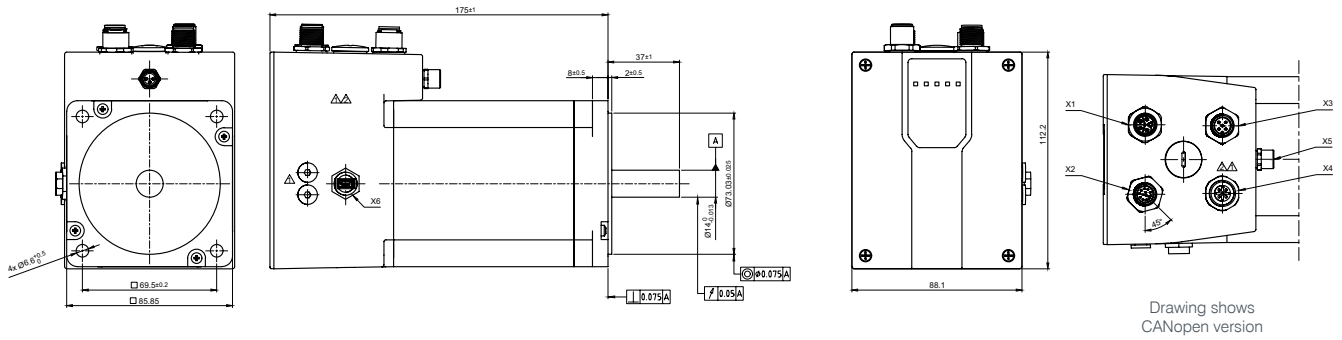
With the free Plug & Drive Studio software from Nanotec, you can easily parameterize and program the PD6. Via the integrated oscilloscope, all motor values can be observed in a millisecond cycle.

### High profitability

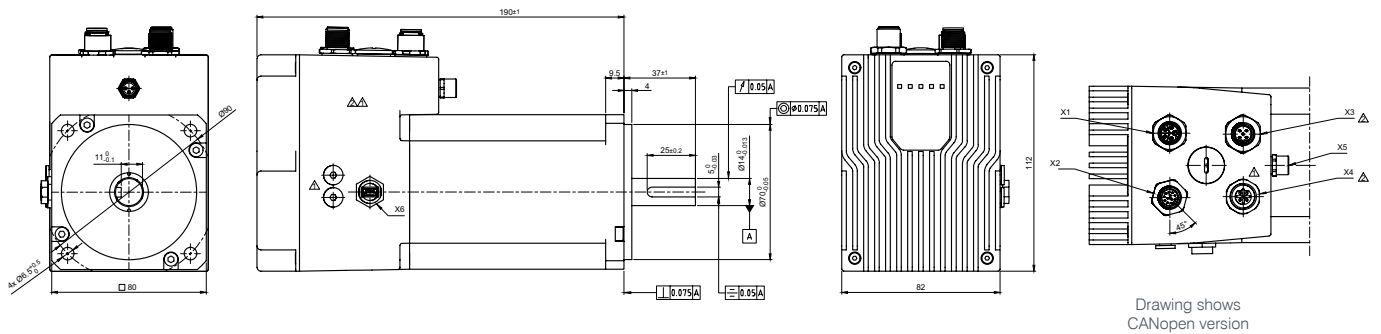
Mounting and cabling costs are reduced thanks to the integration of controller and encoder in the motor.



## PD6-E



## PD6-EB



	PD6-E891	PD6-EB80
<b>Motor type</b>	stepper motor	brushless DC motor
<b>Size</b>	86 mm	80 mm
<b>Length</b>	114 - 175 mm	134 - 190 mm
<b>Rated power</b>	-	283 - 940 W
<b>Holding torque</b>	320 - 933 Ncm	-
<b>Rated torque</b>	-	90 - 300 Ncm
<b>Rated speed</b>	-	3,000 rpm
<b>Operating voltage</b>	12 - 58 V	12 - 58 V
<b>Digital inputs</b>	6 (5/24 V switchable)	6 (5/24 V switchable)
<b>Analog input</b>	0 - 20 mA / 0 - 10 V switchable	0 - 20 mA / 0 - 10 V switchable
<b>Digital outputs</b>	2 (open-drain)	2 (open-drain)
<b>Encoder</b>	singleturn absolute (multiturn optional)	singleturn absolute (multiturn optional)
<b>Encoder resolution</b>	1,024 CPR / 4,096 PPR	1,024 CPR / 4,096 PPR
<b>Fieldbuses</b>	CANopen, EtherCAT, EtherNet/IP, Modbus RTU, Modbus TCP, Profinet	CANopen, EtherCAT, EtherNet/IP, Modbus RTU, Modbus TCP, Profinet
<b>Service interface</b>	USB	USB