

NEW  
STEPPER MOTORS

# High power density

## AS28 – Stepper motor with integrated encoder

This robust stepper motor comes in a mechanical engineering version that is very compact yet offers a very high torque. It is equipped with a high-resolution magnetic encoder and can be ordered with and without brake.

- Encoder with a resolution of 4,096 incr./rev.
- Also with integrated brake (-EB)
- 1.8° step angle
- M8 connector
- Protection class IP65
- Can be combined with a gearbox



	NEMA	Size (mm)	Holding torque (Ncm)	Resolution	Current per winding (A)	Length (mm)
AS2818L1504-E	11	28	1.8	1.8°	1.5	72.2
AS2818L1504-EB	11	28	1.8	1.8°	1.5	107.9

## SCB6018 – Stepper motor with FluxFocus technology

Rare earth magnets are inserted between the stator teeth to ensure that excess magnetic flux is directed back into the teeth, resulting in a holding torque of up to 3.6 Nm.

The SCB6018 series is equipped with a second shaft end to allow the installation of an optical or magnetic encoder.

- Highest power density of all NEMA 24 stepper motors on the market
- Increased torque across the entire speed range
- Available in two lengths
- 1.8° step angle
- Improved efficiency



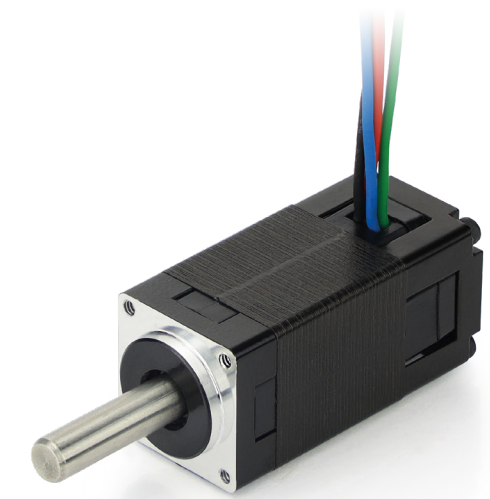
	NEMA	Size (mm)	Holding torque (Ncm)	Resolution	Current per winding (A)	Length (mm)
SCB6018M4204-B	24	60	200	1.8°	4.2	56
SCB6018L4204-B	24	60	360	1.8°	4.2	88

# Many sizes

## STA1418 – Stepper motor NEMA 6

The small flange size makes this motor ideal for use in confined spaces, for example in medical engineering, laboratory automation or optical technology.

- Very compact design
- 1.8° step angle
- Ideal for confined installation spaces
- Matching motor controllers available

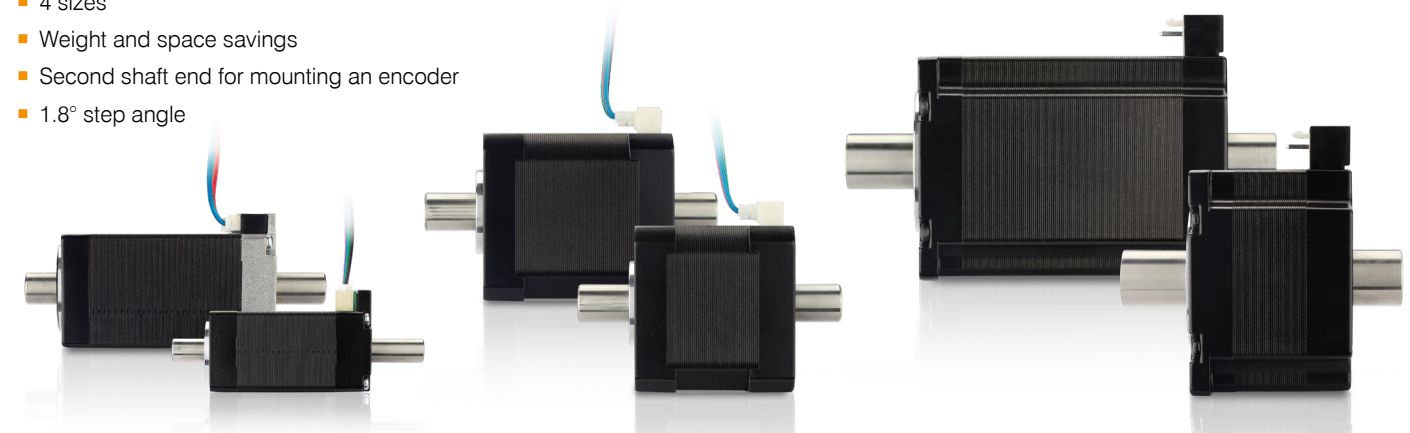


	NEMA	Size (mm)	Holding torque (Ncm)	Resolution	Current per winding (A)	Length (mm)
STA1418S0304-A	6	14	0.62	1.8°	0.3	30

## SCAxx18 – Hollow-shaft motors

The high-torque stepper motors of the SCA series are equipped with a hollow shaft through which cables or laser beams can be passed, or which can be used to hold other machine elements, such as axes or shafts.

- 4 sizes
- Weight and space savings
- Second shaft end for mounting an encoder
- 1.8° step angle



	NEMA	Size (mm)	Holding torque (Ncm)	Resolution	Current per winding (A)	Length (mm)
SCA2018M0804-L	8	20	3.6	1.8°	0.8 A	40 mm
SCA2818L1504-L	11	28	18	1.8°	1.5 A	52 mm
SCA4218M1804-L	17	42	35	1.8°	1.8 A	48 mm
SCA4218L1804-L	17	42	43	1.8°	1.8 A	40 mm
SCA5618X2804-L	23	56	60	1.8°	2.8 A	77 mm
SCA5618L4204-L	23	56	230	1.8°	4.2 A	40 mm

# About us



Whether standard or custom solutions, we offer tailor-made drive systems for applications that require maximum precision, reliability, and functionality. Since 1991, we have been developing a broad range of products that are primarily used in automation systems, laboratory equipment, medical engineering, the packaging industry, and semiconductor production.

Our milestone was the development of the first motor with integrated controller, which played an important role in the company's growth. Today, Nanotec continues to focus heavily on research and development and has been ranked one of the top innovators in Germany in 2021.

With our own production facilities in Feldkirchen and ChangZhou/China, the R&D departments in Germany and Varna/Bulgaria and our sales office in Stoneham, MA/USA, we provide and support customers all over the world with our expertise and customized solutions.



Nanotec Electronic GmbH & Co. KG  
Kapellenstraße 6, 85622 Feldkirchen, Germany  
T +49 (0)89 900 686-0  
F +49 (0)89 900 686-50  
info@nanotec.de  
[www.nanotec.com](http://www.nanotec.com)