

Shaft modification

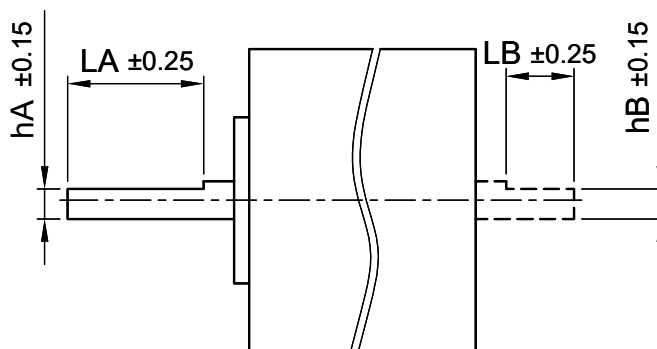
Please download the PDF. To complete the form you need Adobe Reader.

Customer name

Article number

Nanotec offers various shaft modification options which can be ordered individually or in combination: shaft flattening, shorter shaft, thinner shaft, cross bore or keyway. Other machining options or tolerances are also possible for larger quantities. For further information, please contact our sales department: sales@nanotec.de

D-shaft (not Nanotec standard D-Cut "KM-FLAT")



Dimensions

1 motor shaft
2 motor shafts

	LA	hA	LB	hB
1 motor shaft	<input type="text"/>	<input type="text"/>	<input type="text"/>	<input type="text"/>
2 motor shafts	<input type="text"/>	<input type="text"/>	<input type="text"/>	<input type="text"/>

Notes

- The first 3 mm of the shaft (measured from the motor) cannot be machined. For motors with a flange size of NEMA 34 and more, the first 4 mm of the shaft (measured from the motor) cannot be machined.
- If the shaft is flattened on both ends, the flats are not parallel to each other.
- The more economical standard D-shaft from Nanotec can be ordered via the online configurator after selecting a motor. You can find an overview of the dimensions [here](#).

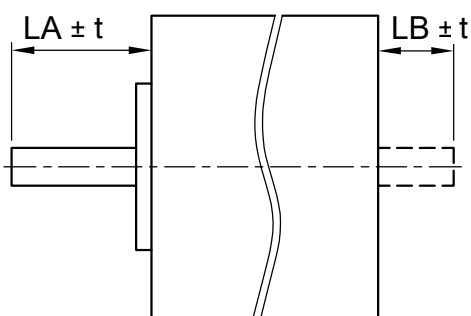
Please send the completed form via e-mail to info@nanotec.de or by fax to +49 89 900686-50.

Shaft modification

Customer name

Article number

Shorter motor shaft



Dimensions

1 motor shaft
2 motor shafts

LA

LB

Note

- The first 3 mm of the shaft (measured from the motor) cannot be machined. For motors with a flange size of NEMA 34 and more, the first 4 mm of the shaft (measured from the motor) cannot be machined.
- t = specified tolerance of the motor (see dimension drawing online)

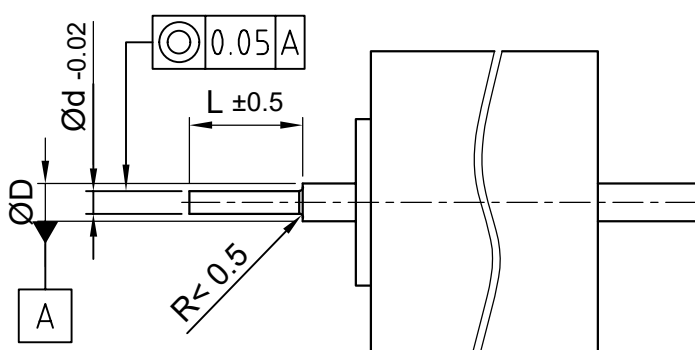
Please send the completed form via e-mail to info@nanotec.de or by fax to +49 89 900686-50.

Shaft modification

Customer name

Article number

Thinner motor shaft



Dimensions

L

d

Desired dimensions

<input type="text"/>	<input type="text"/>
----------------------	----------------------

Notes

- A motor with two shaft ends (B shaft) is necessary for the subsequent machining of a shaft.
- After machining, the B shaft can also be shortened. In this case, please enter the desired length (LB) under "Shorter motor shaft."
- The first 3 mm of the shaft (measured from the motor) cannot be machined. For motors with a flange size of NEMA 34 and more, the first 4 mm of the shaft (measured from the motor) cannot be machined.

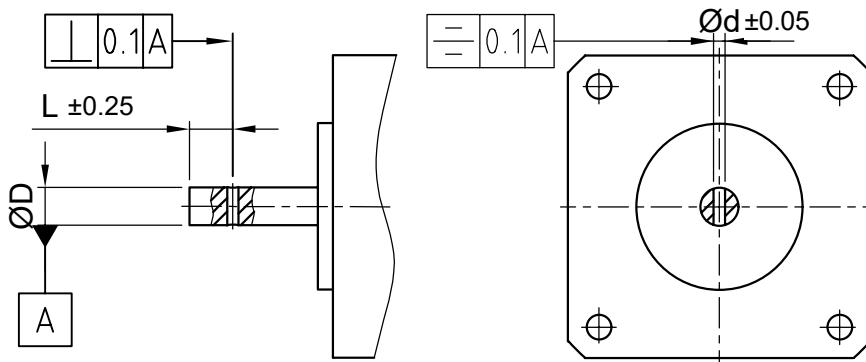
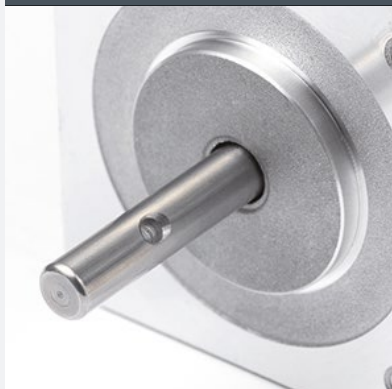
Please send the completed form via e-mail to info@nanotec.de or by fax to +49 89 900686-50.

Shaft modification

Customer name

Article number

Cross bore



Dimensions

L

d

Desired dimensions

--	--	--

Note

- Holes can only be drilled in 0.1 mm increments
- You can find the minimum distance from the center point of the bore to the shaft end and the motor flange in the table below

Motor size

Min. distance from shaft end

Min. distance from motor flange

≤ 60 mm

4 mm

6 mm

≥ 60 mm

6 mm

10 mm

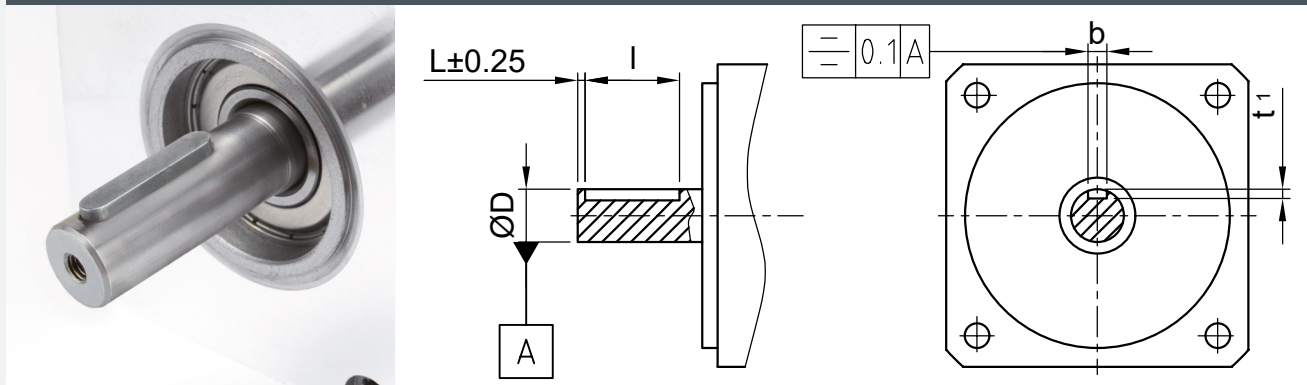
Please send the completed form via e-mail to info@nanotec.de or by fax to +49 89 900686-50.

Shaft modification

Customer name

Article number

Keyway



Dimensions

Desired dimensions

L

l

Keyway acc. to DIN 6885-A, tight seating (P9)

The size of the keyway depends on the shaft diameter:

- 6.35 mm (2x2xl)
- 8 mm (2x2xl)
- 14 mm (5x5xl)

Notes

- All dimensions and tolerances are determined by the shaft end!
- The first 3 mm of the shaft (measured from the motor) cannot be machined. For motors with a flange size of NEMA 34 and more, the first 4 mm of the shaft (measured from the motor) cannot be machined.
- The more economical standard D-Cut from Nanotec can be ordered via the online configurator after selecting a motor. You can find an overview of the dimensions [here](#).

Please send the completed form via e-mail to info@nanotec.de or by fax to +49 89 900686-50.